



GROUPE DES ECOLES CENTRALE BRAZILIAN PARTNERSHIP

CENTRALESUPÉLEC – CENTRALE LYON – CENTRALE NANTES – CENTRALE LILLE – CENTRALE MARSEILLE

THE GROUP ECOLES CENTRALE

5 SCHOOLS IN FRANCE – 3 IN OTHER COUNTRIES



- **CentraleSupélec (2015)**
 - Merge of Centrale Paris (1829) and Supélec (1894)
 - 3 Campus (ParisSaclay, Rennes and Metz)
- **Ecole Centrale Lyon (1857)**
 - Campus is based in Écully since 1967
- **Ecole Centrale Lille (1872)**
 - Founded under the name of “Institut Industriel du Nord”
- **Ecole Centrale Nantes (1919)**
 - Founded under the name of “Institute Polytechnique de l’Ouest”
- **Ecole Centrale Marseille (2006)**
 - Former “École d’Ingénieurs de Marseille” founded in 1891



THE GROUP ECOLES CENTRALE

ELITE INSTITUTES OF SCIENCE AND TECHNOLOGY



Key Figures :

- Nearly **7 000 engineering students**
 - **20% recruited through international partnerships**
- Nearly 1 300 master students
- More than 1 000 PhD candidates
- **33 Research Laboratories**
 - Nearly 1 000 full-time academic staff
 - 12 International Laboratories
 - 35 Industrial Chairs
- **134 International Partners**
- 100 000 engineers in activity on the **GEC's Alumni Network**

GEC's Vision of Engineering :

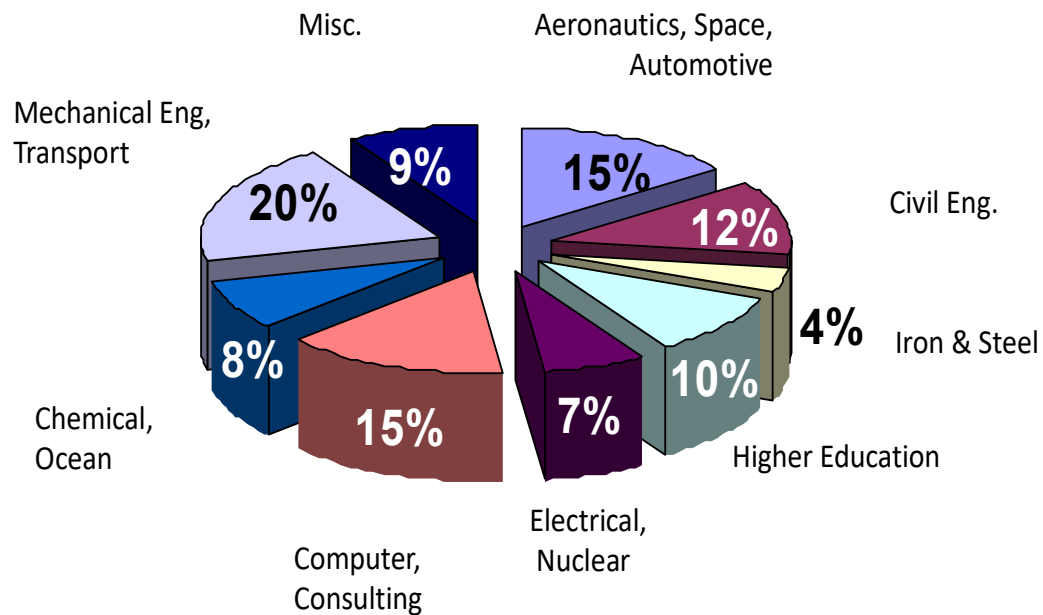
- **Multi-disciplinary curricula**
 - Broad overview of future challenging complex problems
- Access to social sciences, foreign languages and humanities
- **Soft-skills training**
 - Leadership, management & innovation courses
 - Team-work and project-work
- **Corporate Networking** (internships, job fairs, conferences)
- Global vision & open-minded approach
- Industrial problem-solving education

THE GROUP ECOLES CENTRALE

ELITE INSTITUTES OF SCIENCE AND TECHNOLOGY



Recruitment by sector :



GEC's Vision of Engineering :

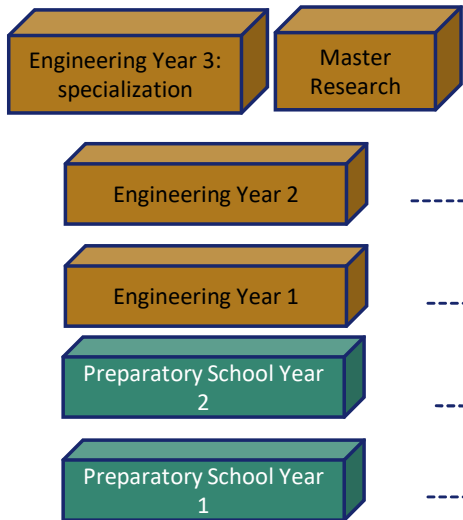
- **Multi-disciplinary curricula**
 - Broad overview of future challenging complex problems
- Access to social sciences, foreign languages and humanities
- **Soft-skills training**
 - Leadership, management & innovation courses
 - Team-work and project-work
- **Corporate Networking** (internships, job fairs, conferences)
- Global vision & open-minded approach
- Industrial problem-solving education

THE GROUP ECOLES CENTRALE

ELITE INSTITUTES OF SCIENCE AND TECHNOLOGY



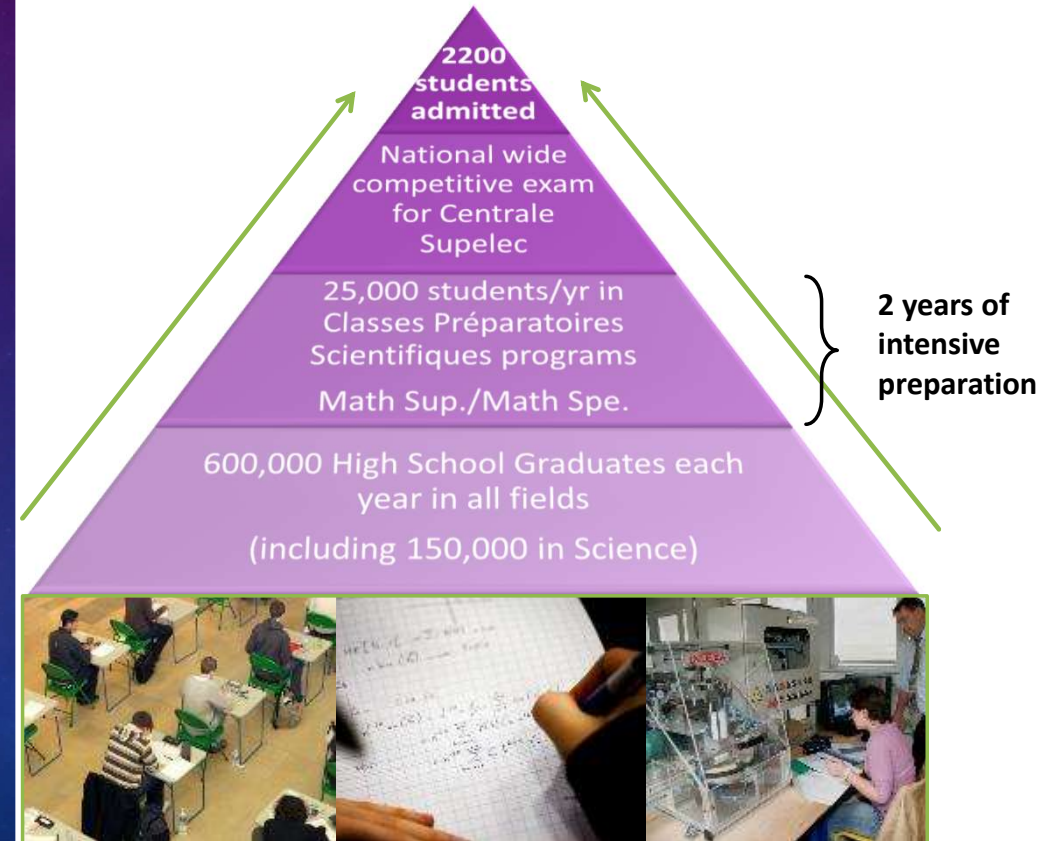
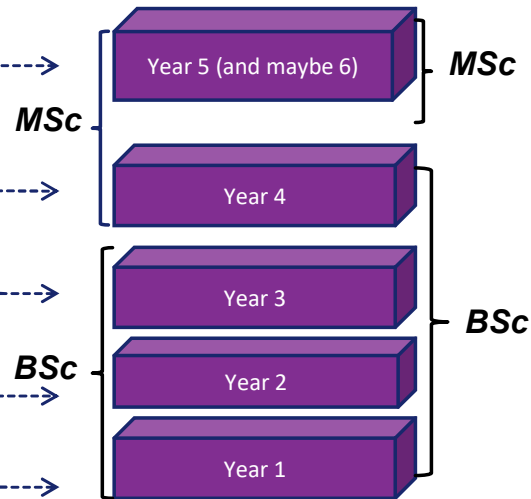
The 3rd years french engineering course model



EU/US course model

The EU model

The Anglo-saxon model



THE GROUP ECOLES CENTRALE CORPORATE PARTNERSHIPS & NETWORKING



2 or 3 mandatory internships

at least 28 weeks in companies and/or research laboratories

Hundreds of **conferences** and **projects in team**

1 jobfair organized every year in Brazil

around 15 companies and 100 students and alumni



SAO PAULO CAREER FAIR

São Paulo
Saturday, April 6th 2019

**HOTEL PULLMAN, IBIRAPUERA,
FROM 12 TO 6:00PM**

Contact : catherine.desarnaud@centralesupelec.fr

THE GROUP ECOLES CENTRALE

SOME WELL-KNOWN ALUMNI



Raphaël Gorgé
Centrale Marseille
CEO Groupe Gorgé



Marie Holive
Centrale Lyon
Executive Director of
NBC Universal
International Networks



Jean-Loïc Galle
CentraleSupélec
CEO Thales Alenia
Space



Jacques Maigné
Centrale Lyon
CEO Hutchinson



Benoit Potier
CentraleSupélec
CEO Air liquide



André & Edouard Michelin



Delphine Ernotte
CentraleSupélec
President France Télévisions



Cédric Gautier
Centrale Nantes
CEO Stellia Aerospace



Carlos Tavares
CentraleSupélec
CEO PSA



Hubert Sagnières
Centrale Lille
CEO Essilor



Michèle Bellon
CentraleSupélec
Former CEO of
ERDF



Marcel Schlumberger



Armand Peugeot

THE GROUP ECOLES CENTRALE

MANY STUDENTS CLUBS AND ASSOCIATIONS



- Students' Union
- **Junior enterprise**, Job Fair organisation
- **Sport clubs** : *Sailing, Rugby, Football, Basketball, Martial Arts,...*
- **Arts clubs** : *Jazz, Chess, Theatre, Cinema, Dance,...*
- **Science & Technology clubs** : *Computers, Fablabs, Robotics,...*
- **Social responsibility** : *tutoring students from disadvantaged backgrounds*
- **International students' clubs**
- and many more...



THE GROUP ECOLES CENTRALE

ACADEMIC EXCHANGE TRACKS



Incoming (GEC schools as Host Institutions) :

- **Double Degree Programs (DD)**
 - Engineering (2 years mobility, courses and internship)
 - DD 1A + 2A
 - DD 2A + 3A
- **Conventional Exchange Program**
 - 1 semester
 - 1 year



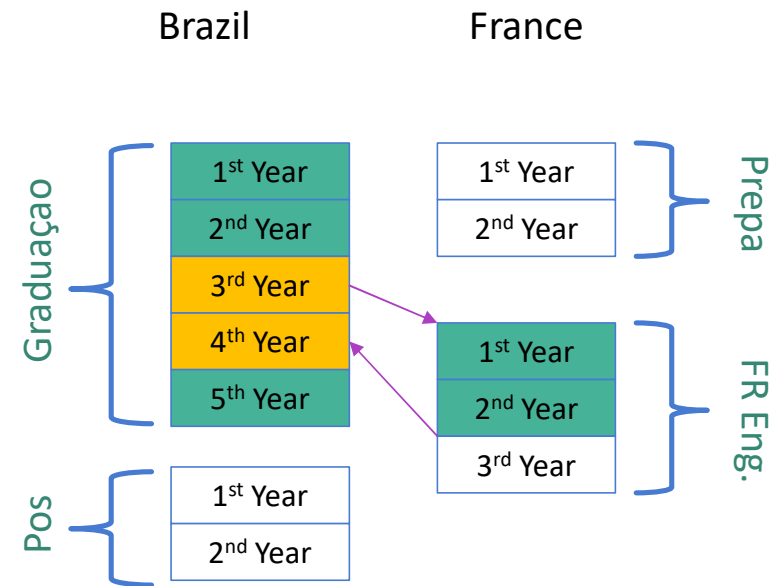
THE GROUP ECOLES CENTRALE

ACADEMIC EXCHANGE TRACKS



Incoming (GEC schools as Host Institutions) :

- **Double Degree Programs (DD)**
 - **Engineering** (2 years mobility, courses and internship)
 - **DD 1A + 2A**
 - DD 2A + 3A
- Conventional Exchange Program
 - 1 semester
 - 1 year



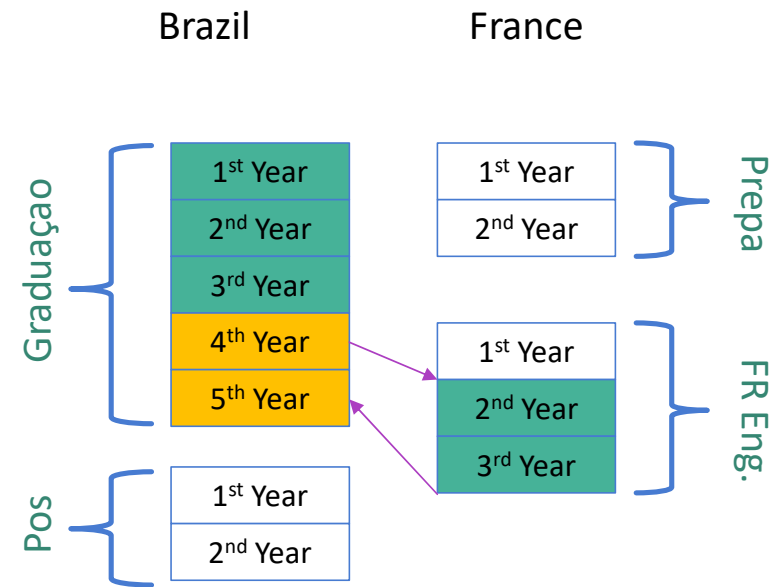
THE GROUP ECOLES CENTRALE

ACADEMIC EXCHANGE TRACKS



Incoming (GEC schools as Host Institutions) :

- **Double degree Programs (DD)**
 - **Engineering** (2 years mobility, courses and internship)
 - DD 1A + 2A
 - DD 2A + 3A
- Conventional Exchange Program
 - 1 semester
 - 1 year



THE GROUP ECOLES CENTRALE

ACADEMIC EXCHANGE TRACKS



Incoming (GEC schools as Host Institutions) :

- Double degree Programs (DD)
 - Engineering (2 years mobility, courses and internship)
 - DD 1A + 2A
 - DD 2A + 3A
- Conventional Exchange Program
 - 1 semester
 - 1 year

1 semester or 1 year

(in the 2nd or the 3rd year at Ecoles Centrale)

- Courses,
- Projects in team
- Internship in a lab or in a company

These mobilities don't deliver the French degree !

THE GROUP ECOLES CENTRALE

BRAZILIAN PARTNERSHIPS - RECRUITMENT



Recruitment Agenda Calendar for Double Degree :

- July-September : Call for double degree
- October : Interview of candidates by the GEC committee
- November : Announcement of Selected Candidates
- December : Deadline for Eiffel scholarships
- April : Announcement of Eiffel scholarships
- May : Announcement of BRAFITEC scholarships
- August-September : Beginning of Mobility exchange

Double Degree Objectives with Brazil : ~ 130 mobilités (for September 2021)

- CentraleSupélec
 - DD 1A + 2A (30)
 - DD 2A + 3A (15)
- Centrale Lille
 - DD 1A + 2A (18)
- Centrale Lyon
 - DD 1A + 2A (12)
 - DD 2A + 3A (12)
- Centrale Marseille
 - DD 1A + 2A (15)
 - DD 2A + 3A (8)
- Centrale Nantes
 - DD 1A + 2A (18)
 - DD 2A + 3A (9)



CENTRALESUPELEC

CENTRALESUPÉLEC

A GLOBAL LEADING ENGINEERING SCHOOL IN SCIENCE & TECHNOLOGY

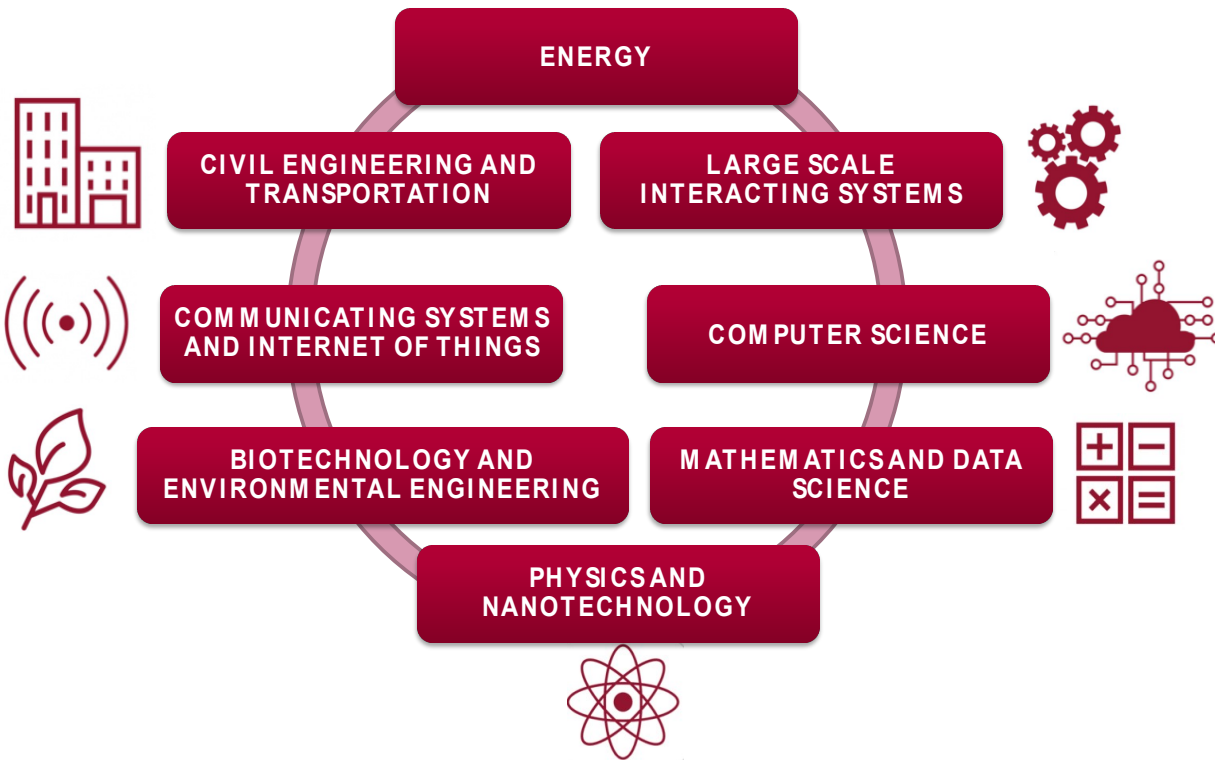


- Top tier French « Grandes Ecoles »
- Ecole Centrale Paris (1829)
- Supélec (Ecole Supérieure d'Electricité - 1894)
- merged in Jan 1st 2015 to jointly create CentraleSupélec covering all the fields of engineering
- Sharing **values** of scientific excellence, innovation, entrepreneurship, internationalization and leadership
- Founding members of Université Paris-Saclay





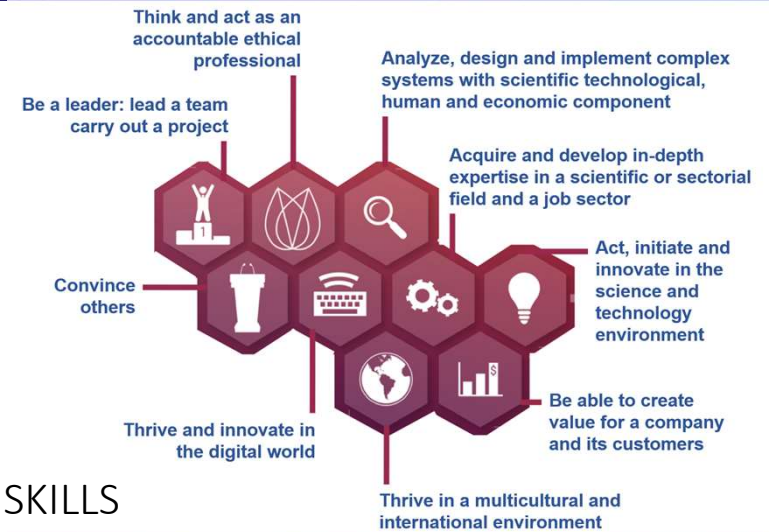
MULTI-DISCIPLINARY



Pedagogy modalities: interdisciplinarity and meaning, skill's evaluation and new pedagogies with active learning, concrete situations, associative activities, companies at the heart of the trainings, project and professional training student as an actor of his curriculum and his professional project

Energy Energy Resources [PS] Energy Networks & Smart Grids [PS] Energy transition [PS]	Biotechnology & environmental eng. Environment / Sustainable Production [PS] Healthcare & biomedical services [PS]	Mathematics & Data Science Mathematical Modeling & Simulation [PS] Data & Information Science [PS/M]	Physics & Nanotechnology Physics & Photonics [M] Quantum Engineering [PS]
Large-Scale Interactive Systems Control Engineering [PS/R] Design and System Sciences [PS] Supply Chain & Operations Management [PS]	Internet of Things & Communication Systems Smart Networks Systems [PS] Connected Objects & Embedded Systems [R] Mobile Communicating Systems [PS]	Computer science Software Design [PS] Artificial Intelligence [PS] Architecture of Information Systems [PS] Cybersecurity [R]	Civil eng. & Transportation Construction & Urban Engineering [PS] Mechanical & Aerospace Engineering [PS]
Energy Energy Resources [PS] Energy Networks & Smart Grids [PS] Energy transition [PS]	Biotechnology & environmental eng. Environment / Sustainable Production [PS] Healthcare & biomedical services [PS]	Mathematics & Data Science Mathematical Modeling & Simulation [PS] Data & Information Science [PS/M]	Physics & Nanotechnology Physics & Photonics [M] Quantum Engineering [PS]
Large-Scale Interactive Systems Control Engineering [PS/R] Design and System Sciences [PS] Supply Chain & Operations Management [PS]	Internet of Things & Communication Systems Smart Networks Systems [PS] Connected Objects & Embedded Systems [R] Mobile Communicating Systems [PS]	Computer science Software Design [PS] Artificial Intelligence [PS] Architecture of Information Systems [PS] Cybersecurity [R]	Civil eng. & Transportation Construction & Urban Engineering [PS] Mechanical & Aerospace Engineering [PS]

PS = campus of Paris-Saclay
R = campus of Rennes
M = campus of Metz



SKILLS



CENTRALE LYON

CENTRALE LYON

A LONG CULTURE IN ENGINEERING EDUCATION



A public school founded in 1857

- **1550** Engineering Students in Training (1/4 Female) 
- **200** PhD Students, **235** Master Students
- **400** Staff, 
• **120** Academics,
• **50** Full Researchers 
- **24%** Foreign Students from more than 50 Different Nationalities on the campus
- **12000** Alumni throughout the World



- Rhône-Alpes is France's **Second** most Important Region, economically
- **Lyon** is just **2 hours** from **Paris** by the TGV High Speed Train,
- **90mn** from the **Mediterranean coast**, and
- **90mn** from the **Alp Mountains** (The Rhône-Alpes Region has no less than **216** ski resorts)

CENTRALE LYON

A LONG CULTURE IN ENGINEERING EDUCATION



Research: One of Centrale Lyon's strongest point

**160 Researchers , 85 Research Engineers,
200 PhD students, 50 Post docs**

6 CNRS laboratories (National Scientific Research Center)

- Laboratory of Fluid Mechanics and Acoustics (**LMFA**)
- Laboratory of Tribology and Systems Dynamics (**LTDS**)
- Lyon Nanotechnology Institute (**INL**)
- **Ampère** Laboratory (Electrical Engineering)
- Camille Jordan Institute (**ICJ** : Mathematics)
- Lyon Research Center for Images and Intelligent Information Systems (**LIRIS**)



Main partners : AIRBUS, ALSTOM, CEA, CNES, DASSAULT AVIATION, DASSAULT SYSTEMS, DCN, EADS, EUROCOPTER, EDF, LAFARGE, MICHELIN, PSA, RENAULT, SAINT-GOBAIN, SNCF, SAFRAN, SNECMA, ST MICROELECTRONICS, ANDRITZ, IHI, THALES, THOMSON MULTIMEDIA, TOTAL, NAVAL Group....



CENTRALE NANTES

CENTRALE NANTES

FOCUSED ON INTERNATIONAL DEVELOPEMENT



-  Tradition dating back to 1919
-  Among the best “French Engineering Schools” / 350+
-  2 150 graduate students
-  37,000+ Centrale Groupe alumni
-  550 Researchers and teaching staff
-  270 PhD students
-  40-acre campus in Nantes

Industrial environment

-  Nantes & Saint-Nazaire Airbus factories
-  STX Ship building (Queen Mary II)

6 Laboratories associated to CNRS (A or A+) for a cutting edge research



- **Fluid Mechanics Laboratory (LHEEA):** Hydrodynamics & Ocean Eng., Energetics, Atmosphere Dynamics, Internal combustion engines
- **Laboratory of Digital Sciences of Nantes (LS2N):** Cybernetics (Robotics, Signal & Automatics, Electronic Systems, Telecom & Radar) and Computer Science
- **Research Institute of Civil Engineering & Mechanics:** Metallic & composites assemblies, computational mechanics, polymers...
- **Laboratory for Mathematics “Jean Leray”:** non-linear PDE, scientific calculus, approximation, probability statistic
- **Urban Environment and Architecture (CERMA):** modeling & simulation of natural phenomena, design and characterization of ambiance
- **High Performance Computing Institute (ICI):** a mid-sized computing center of 6000 cores, one of the most powerful French regional centers.





SHAKE THE FUTURE.



Centrale Nantes specialisations and masters (in english)

- Control, embedded systems, image processing
- Robotics
- Virtual reality, computer science
- Atmosphere, water and urban environment
- Ocean engineering
- Civil and environmental engineering
- Aeronautics
- Materials and Composites
- Energetics and propulsion
- Industrial engineering
- Manufacturing
- Health



EMARO+: Advanced Robotics
(Coordinator Centrale Nantes)



MCM: Computational
Mechanics Master + PhD



EMShip Advanced Design:
Naval architecture



REM: Renewable Energies
in the Marine environment

* Offering scholarships for students covering tuition fees + insurance/travel, monthly allowance



CENTRALE LILLE

CENTRALE LILLE

KEY FIGURES



Centrale Lille

Lille Beffroi



First automated metro in the world

Groupe des Écoles Centrale - Brazilian Partnership



Leonard de Vinci



Louvre Lens near Lille

✓ 270 People

- 31 Professors
- 49 Associate Professors
- 10 CNRS
- 120 PhD Students
- 27 Postdocs / Research engineers / ATER
- 35 Invited Profs / PAST (7 FTE)
- 17 Teaching Assistants

1500 Students

- 1273 Engineering *Diplôme d'Ingénieur*
- 69 Master Sciences M2R (Research)
- 120 Doctoral Ph.D programs

✓ 25 M€ Total budget

✓ 88 International partnerships

✓ 200 Company partnerships

CENTRALE LILLE

4 AXES OF SPECIALIZATION IN 8 TRACKS



SUSTAINABLE CONSTRUCTIONS & ENERGY

- Constructions and sustainable materials
- Energy and smart grids

SMART SYSTEMS AND ENVIRONMENTS

- Smart systems and advanced networks
- Future networks and smart environments

INDUSTRY FOR THE FUTURE

- Smart industries
- Sustainable conception and productions

FROM STRATEGY TO DATA MANAGEMENT

- Data science and Artificial intelligence
- Modelisation and industrial architecture (IT)



*Fundamental informatics
Computer Engineering
Automatic Control
Signals*



*Micro-Nano-Technologies
Functional Electronics
Acoustics & Optoelectronics
Microfluidics*



*Electrotechnics
Power Electronics*



*Catalytic
Process Engineering
Solid chemistry*



*Civil Engineering
Material Sciences
Mechanics*



Fluid Mechanics

Involvement in 6 Laboratories



CENTRALE MARSEILLE

CENTRALE MARSEILLE

INNOVATION SPIRIT AND SENSE OF RESPONSIBILITY

Marseille, the 2nd biggest city in France

- 860 000 people
- 3000 researchers
- 2nd pole of public research in France
- 100 000 students



Groupe des Écoles Centrale - Brazilian Partnership



Centrale Marseille facts and figures

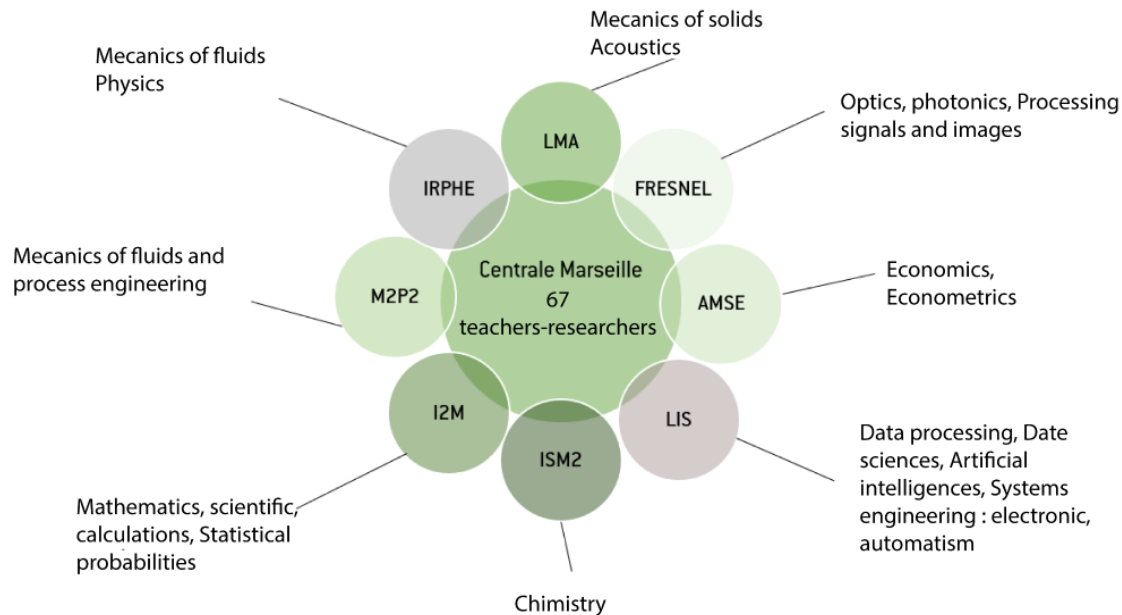
- **1000** Students registered in the engineering program
- **11** Masters with **39** specialities
- **80** PhD students supervised by Centrale Marseille researchers
- **15 000** Alumni throughout the world
- **Staff** : **70** administratives, **85** teachers and researchers and more than **200** instructors
- **8 research laboratories in co-supervision**

CENTRALE MARSEILLE

INNOVATION SPIRIT AND SENSE OF RESPONSIBILITY



8 research laboratories



Engineering Specializations :

- **DIGITAL-e** → Consulting, Computer Science & Data Science
- **GREEN** → Chemistry, process engineering and sustainable processes
- **MECA** → **Mechanics**
 - Modelization of Structural and Material Mechanics,
 - Fluids : energy, transport, environment, health,
 - Marine Engineering
- **MMEFI** → Mathematics, Management, Economics & Finance
- **PICSEL** → Photonics, Image, Signal and Communicaton
- **Complex System Engineering (Master in English)**
 - Environmental Engineering
 - Biomedical Engineering



<http://www.centralesupelec.fr/>

<http://www.ec-lyon.fr/>

<https://www.ec-nantes.fr/>

<http://centralelille.fr/>

<https://www.centrale-marseille.fr/>